

Sparkman Seminar Series in Global Health



Lecture: “Applications for Remote Sensing & GIS in Public Health and Preparedness”

Ryals 407

February 25, 2009

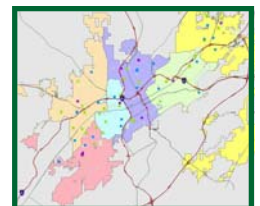
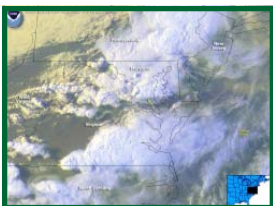
12:00 noon to 1:00 p.m. CST

Lunch is served - please bring your own drink.

Community, emergency, and medical researchers and planners often need the “big picture.”

- Services and resources are planned in relationship to population demographics
- Researchers often need the “big picture” to answer environmental research questions.
- Emergency management efforts are enhanced when responders can get an overview of the nature and extent of damage following a disaster.

Come and learn more about remote sensing and GIS technology and how you might apply this technology to your research!



LABORATORY FOR GLOBAL HEALTH OBSERVATION
WORKSHOP FACULTY: SARAH H. PARCAK, PHD & AKHLAQUE HAQUE, PHD
“Remote Sensing & GIS for Community, Emergency & Medical Researchers and Planners” Workshop dates: May 11-13, 2009 from 9-5 CDT
Location: UAB Heritage Hall, Rm. 402
Email dburnett@uab.edu or call 996-7981 for more information or to register for the May workshop. Registration fees apply.

